

Print
PASS

PrintPASS[™] - Your Ticket to Managing Print Costs



Can You Answer these Questions?

- How many printers, copiers, MFPs do you have?
- Are they being properly used? Too much? Too little?
- How often are they in need of service?
- How often are the printers out of toner?
- How old are they?
- How much IT time is spent supporting printing devices?
- How much do you think it costs you to process and pay invoices?
- What is your current meter read submission process?
- How much time does it take?

**Don't know? Printing is a necessary business expense, but chances are it is an unknown, unmonitored and uncontrolled expense.
Do you have a print management plan in place today?**



Trends Impacting Printing Fleets

- The Gartner Group estimates that corporations spend between 1-3% of their annual revenue on printing
- The average office employee spends \$15,000 a year in document output*
- The cost of printing continues to increase due to higher page volumes and increased use of color devices
- 40% of all IT / help desk calls are printer/copier related**
- The average office has 1 printing device for every 4 employees when the optimum ratio is 1 to 10**
- Only 10% of document costs are attributed to the direct cost of equipment, supplies, service and paper - the remaining cost is attributed to IT support, facility, user interaction and other expenses!***

* Source: All Associates Group 2002 EDAM

** Source: The Gartner Group "Rightsizing Output Fleets: The Hidden Goldmine," March 2001

*** CAP Ventures, Info Trends: "Office Document Output Assessment Services," October, 2005



Financial Impacts of Printing Devices in Organizations

- Increased page volumes = increased imaging costs
- Capital budgets are being stretched with the erratic purchase of output technology, reactive supplies ordering and emergency servicing
- The related costs of administration, management and supply inventory continue to rise
- High cost of IT time is spent dealing with printing device maintenance issues and detracts from the departments core initiatives
- Little or no device placement management results in high-cost per print devices printing a large volume of pages



* Source: DocuAudit International

PrintPASS[™] Can Keep Your Office Printing

An ability to print is important to your business, but for too long has been an uncontrolled expense. AAA Business Systems offers an innovative program to help you proactively administer, service and supply your printing devices.

PrintPASS[™] Print Management provides a window into your print environment using an innovative, simple and secure software solution to collect printing device metrics. Leveraging real time information gathered from your print environment, we can collaborate with you on a print management strategy to proactively administer, service and supply your printer fleet.



Maximize the Power of Your Printer Fleet

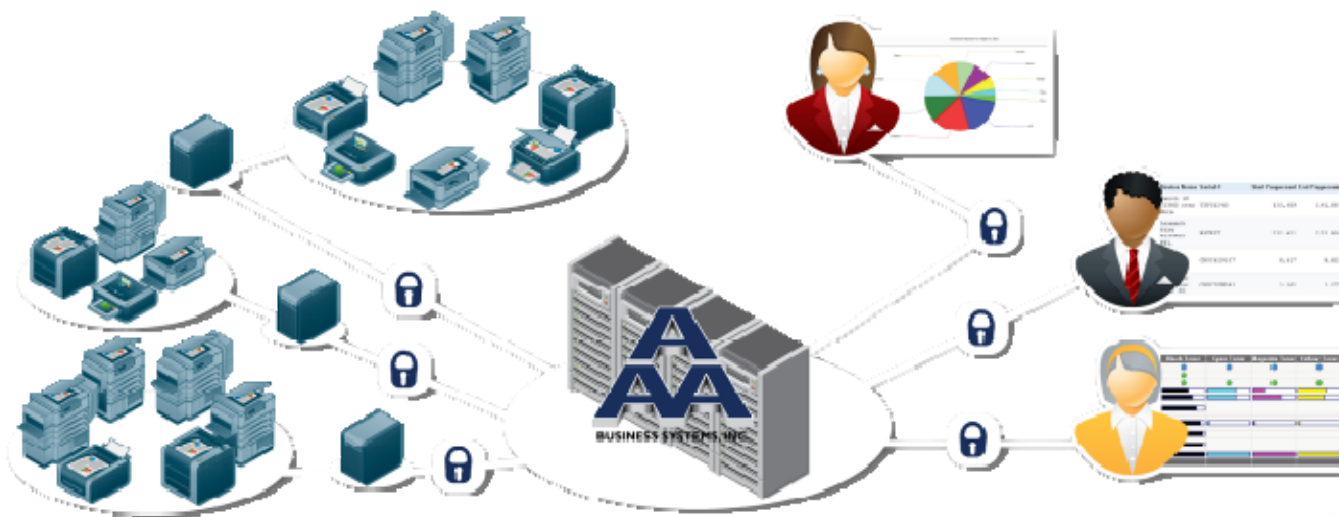
AAA can take over administration of your printing devices, so all you need to do is print productively. We can help you:

- Assess the efficiency of your printing process
- Identify and plan to control costs
- Automate processes and build efficiencies
- Maximize your current printing assets
- Proactively service and supply your devices
- Reduce inventory costs with just in time supplies delivery
- Decrease administrative costs with one monthly invoice



PrintPASS™ Software: How it Works

The PrintPASS™ Print Management Data Collection Agent is installed on a networked PC running Windows 2000/XP or higher, or directly onto a Windows 2003 server. This software application runs in the background, collecting and transmitting critical imaging metrics to the PrintPASS™ secure web server. Your printer information will be available 24 hours a day, 7 days a week via the PrintPASS™ secure website.



PrintPASS[™] Software: Intelligent Technology

The Data Collection Agent uses one-way communication. The collected data is sent via Port 443 (HTTPS), Port 80 (HTTP) or Port 21 (FTP) to the PrintPASS[™] secure web server.

The network traffic created by a DCA network scan is minimal. When the DCA scans a single subnet (254 IP addresses) the network traffic is approximately equal to that created by visiting a single standard webpage.

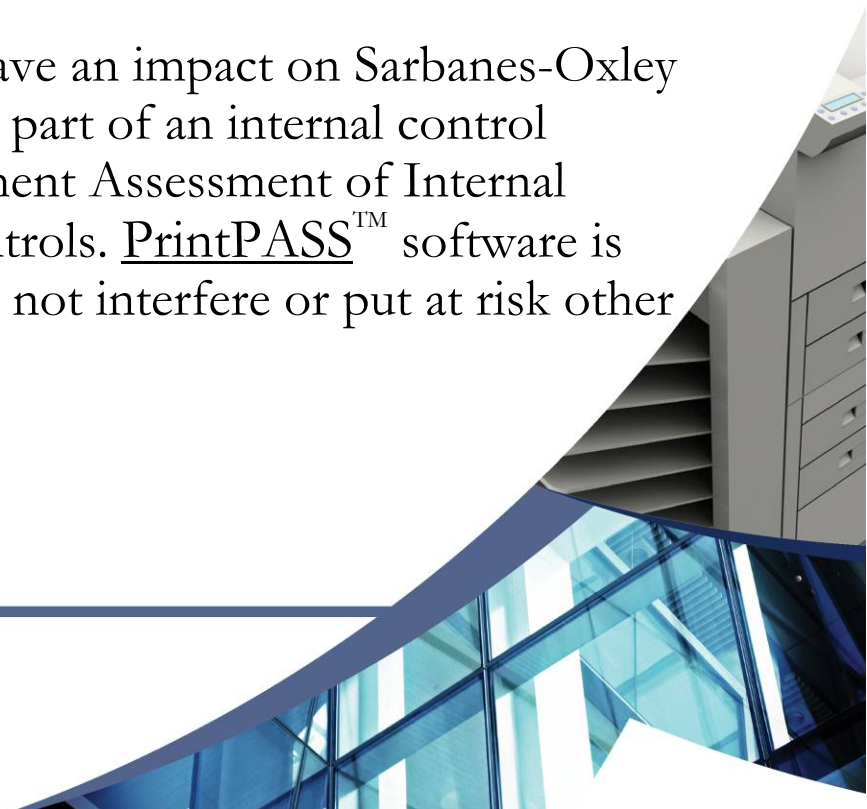
No personal or user data is collected with the software; only the core metrics needed to maintain and manage your printing assets are gathered.



PrintPASS[™] and Compliance Acts

PrintPASS[™] software applications will not have an impact on compliance with the Health Insurance Portability & Accountability Act (HIPAA) for covered entities, because the applications do not collect, house, or transmit any information regarding the content of print jobs.

PrintPASS[™] software applications will not have an impact on Sarbanes-Oxley compliance as it is not intended to be used as part of an internal control structure as outlined in section 404: Management Assessment of Internal Controls and will not interfere with these controls. PrintPASS[™] software is not designed as an IT control system and will not interfere or put at risk other systems that are intended for that purpose.



PrintPASS™ Collects Powerful Information

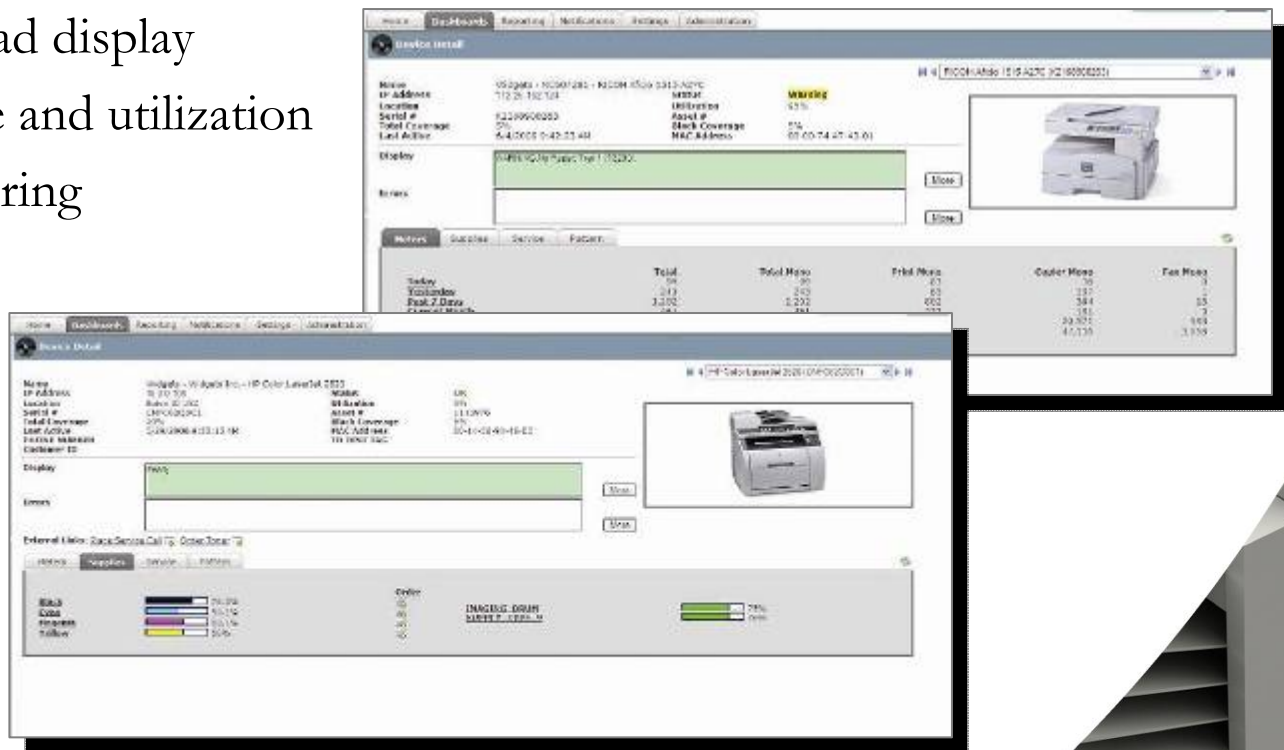
This intelligent technology gives us the ability to proactively maintain your printing assets so you can maximize uptime and minimize costs. PrintPASS™ technology collects critical information from your networked printers, copiers, MFPs and fax machines, such as:

- Current status
- Supplies levels
- Page counts
- Model descriptions
- Serial and asset numbers
- Printer locations
- Cost-per-Page tracking
- Automated service alerts
- Utilization
- Historical trending reports
- Power consumption



PrintPASS™ : Detail View

- Simple meter read display
- Device coverage and utilization
- Supplies re-ordering
- Device display
- Device errors



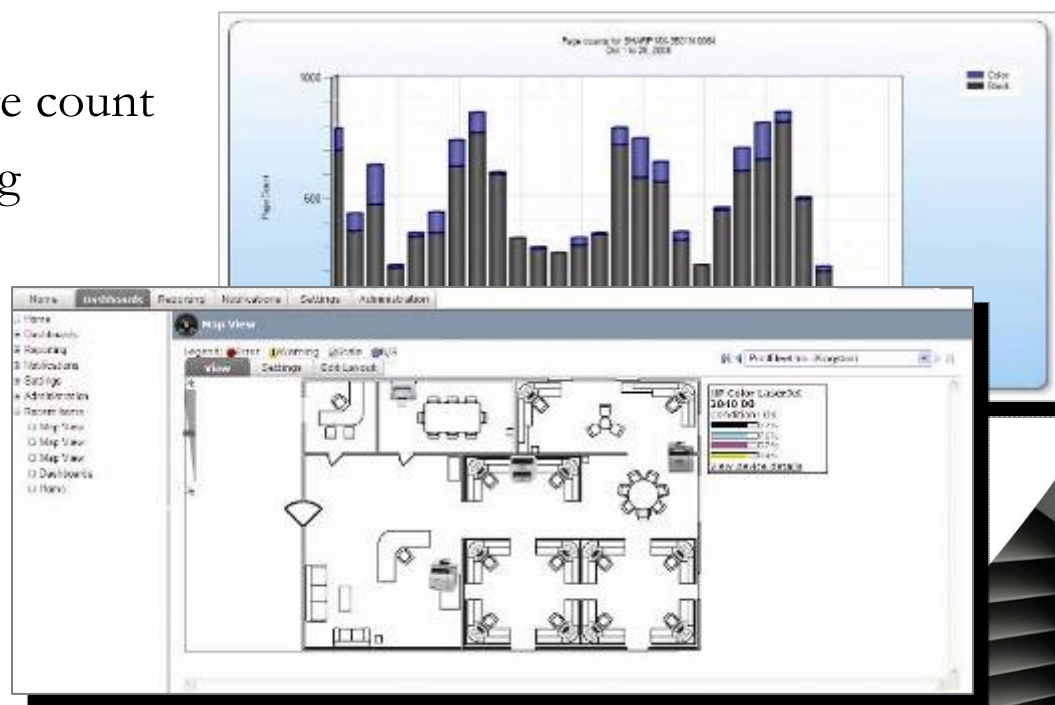
PrintPASS™ : Supplies View

- Supplies Status
- Device Status
- Physical Location
- Page Counts
- IP Address
- Asset Number

Device Name	Supplies Status	Count	Serial Number	IP Address	Location	Last Active
Canon IR C3250-C1.2.1.50C	● ●	44,885	MSK00390	192.168.9.20	Marketing Dept.	10/27/2008
SHARP AR-BC320.0416	● ●	31	69005271	192.168.9.25	ITM Office	10/24/2008
Canon IR3030.00C0	● ●	181		192.168.9.80		10/24/2008
SHARP AR-MSS0N.543C	● ●	482	3800372900	192.168.9.28	Service Office	10/27/2008
Canon IR3330.00C0	● ●	789		192.168.9.72		10/27/2008
Canon IR3330.00D0	● ●	1,583		192.168.9.118		10/24/2008
Canon IR5000-1.1.1.0.0004	● ●	3,043		192.168.9.18		10/27/2008
Canon IR5025.43.02.249C	● ●	509	67AE01173	192.168.9.62		10/27/2008
Canon LASER CLASS 300 V1	● ●	4793	67AE30198	192.168.9.20		10/27/2008
hp LaserJet 1300n 03C2	● ●	193	CNBB077648	192.168.9.96		10/27/2008
SHARP MX5500N 0301	● ●	15	6900209900	192.168.9.59	ITM Dept.	10/27/2008
hp LaserJet 1300n 02C2	● ●	122	CNBB077648	192.168.9.106	Administrative	10/24/2008
Canon IR C3090	● ●	50	TXP01240	192.168.9.45		10/27/2008
SHARP AR-C330.6522	● ●	5445		192.168.8.21		10/27/2008
HP LaserJet M2727n MFP Q	● ●	174	CND9135116	192.168.9.22		10/27/2008
SHARP AR-C300.5422	● ●	677		192.168.9.85		10/24/2008
HP Color LaserJet 2840.00	● ●	7	CNHK78M043	192.168.9.69		10/24/2008
HP LaserJet 4100 MFP Q077	● ●	326	USLQY02041	192.168.9.32		10/24/2008
HP LaserJet 4002 Series 0	● ●	69	USEF171982	192.168.9.94		10/24/2008
HP LaserJet 4000 Series 0	● ●	866	USNC128736	192.168.9.11	Finance	10/27/2008
HP LaserJet P2015 Series	● ●	8	CNBJF05882	192.168.10.20		10/24/2008

PrintPASS™ : Asset Reports

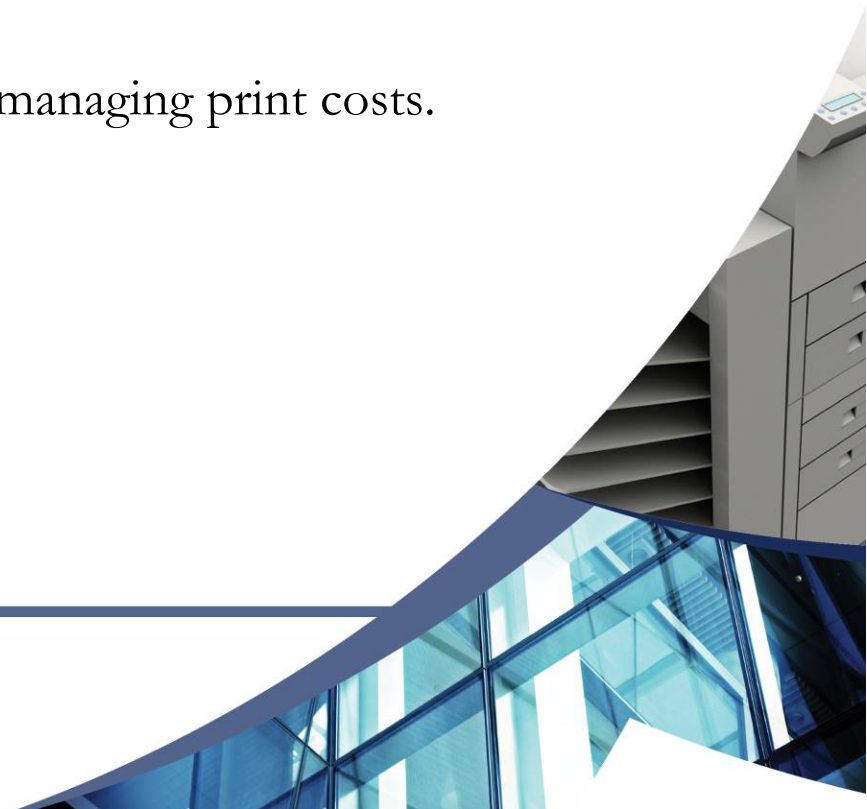
- Individual page counts hourly, daily, and monthly
- Individual toner levels
- Introduction date vs. page count
- Device Location Mapping
- Flag Report
- Volume Reports



What Are You Waiting For?

For over a quarter of a century, the name AAA Business Systems has been synonymous with high-quality products, great reliability and a high level of service to our customers. Established in 1979, AAA Business Systems is your One Company, One Total Solution.

Ask about PrintPASS[™] today, your ticket to managing print costs.



Contact Us

AAA Business Systems, Inc.

2715 Drake Street

Fayetteville, Arkansas 72703

Phone: (479) 442-4185

(479) 636-9077

Fax: (479) 442-0342

www.aaabm.com



BUSINESS SYSTEMS, INC.

