

1-2-1 Installation environment

1. Temperature: 10 to 32.5°C/50 to 90.5°F
2. Humidity: 15 to 80%RH
3. Power supply: 120 V AC, 7.8 A
220 - 240 V AC, 4.0 A
4. Power source frequency: 50 Hz $\pm 0.3\%$ /60 Hz $\pm 0.3\%$
5. Installation location

Avoid direct sunlight or bright lighting. Ensure that the photoconductor will not be exposed to direct sunlight or other strong light when removing paper jams.

Avoid locations subject to high temperature and high humidity or low temperature and low humidity; an abrupt change in the environmental temperature; and cool or hot, direct air.

Avoid places subject to dust and vibrations.

Choose a surface capable of supporting the weight of the machine.

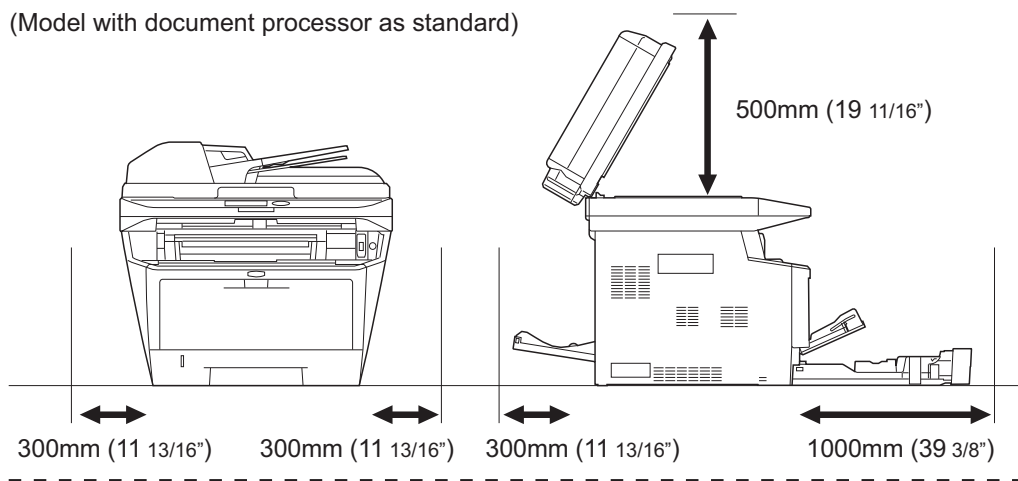
Place the machine on a level surface (maximum allowance inclination: 1°).

Avoid air-borne substances that may adversely affect the machine or degrade the photoconductor, such as mercury, acidic or alkaline vapors, inorganic gasses, NO_x, SO_x gases and chlorine-based organic solvents.

Select a well-ventilated location.

6. Allow sufficient access for proper operation and maintenance of the machine.

(Model with document processor as standard)



(Model with original cover as standard)

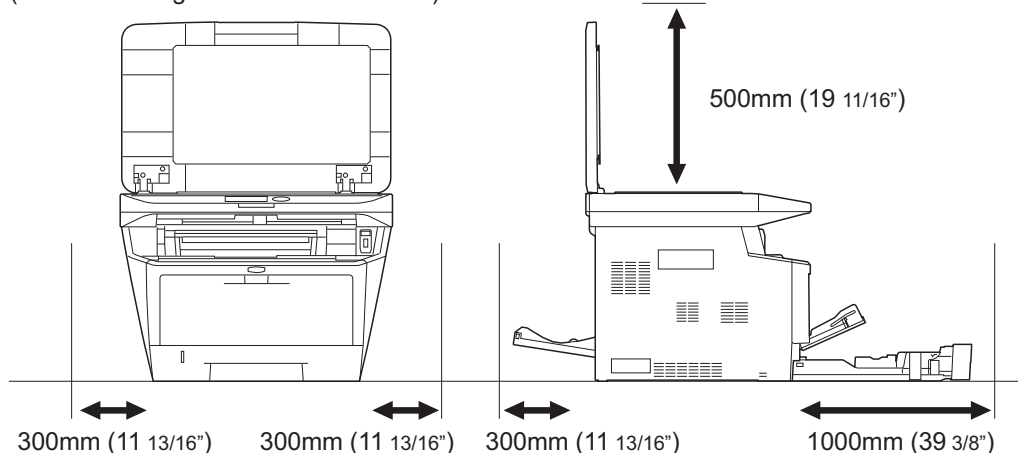


Figure 1-2-1

1-2-2 Unpacking

(1) Unpacking

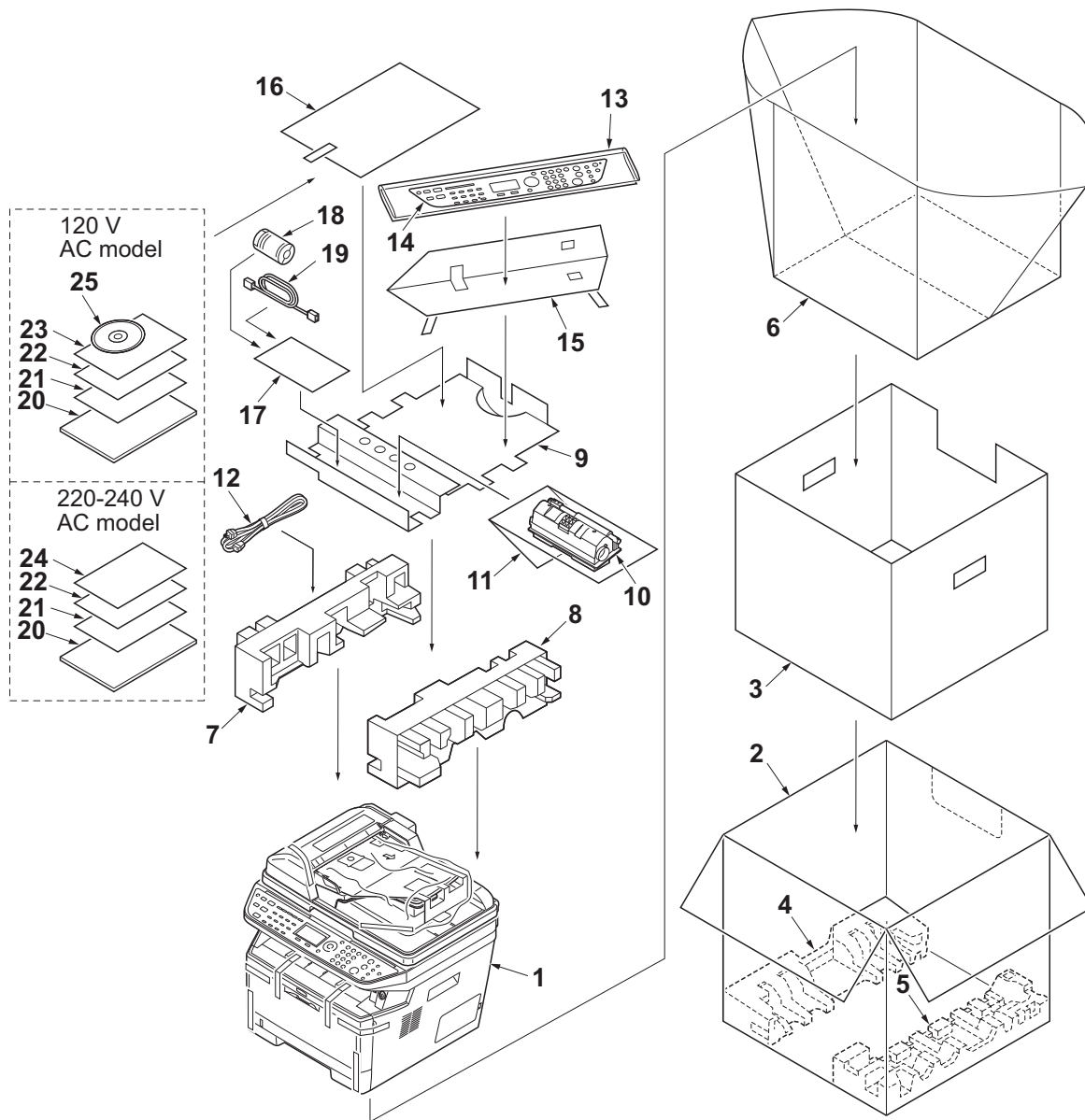


Figure 1-2-2

- | | |
|---------------------|------------------------------|
| 1. Machine | 11. Plastic bag |
| 2. Outer case | 12. Power cord |
| 3. Inner frame | 13. Plastic bag (250 ´ 600) |
| 4. Bottom pad L | 14. Operation labels |
| 5. Bottom pad R | 15. Operation label pad |
| 6. Machine cover | 16. Plastic bag (240 ´ 350) |
| 7. Top pad L | 17. Plastic bag |
| 8. Top pad R | 18. Ferrite core |
| 9. Accessory spacer | 19. Modular cable * |
| 10. Toner container | 20. Quick installation guide |

- | |
|--------------------------------|
| 21. Safety guide 1 |
| 22. Safety guide 2 |
| 23. Toner OSHA leaflet * |
| 24. EEA information leaflet ** |
| 25. DVD-ROM* |

* 120 V AC model only.
 ** 220-240 V AC model only.

(2) Removing the tapes

<Procedure>

1. Remove two tapes.
2. Open the sheet.

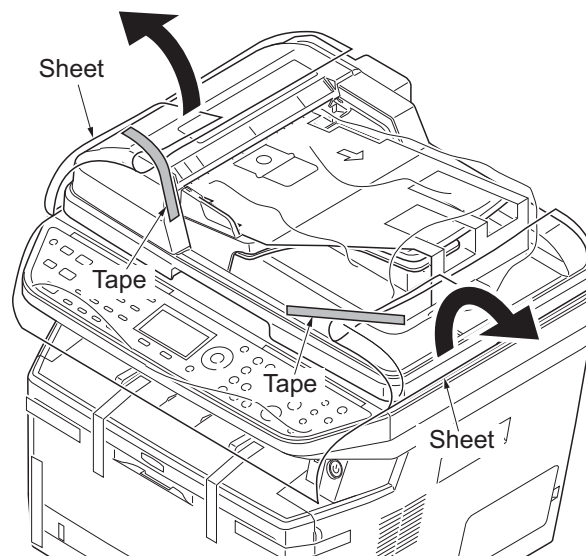


Figure 1-2-3

3. Remove two tapes A.
4. Open the top cover.
5. Remove the tape B and then remove the spacer.
6. Close the top cover.

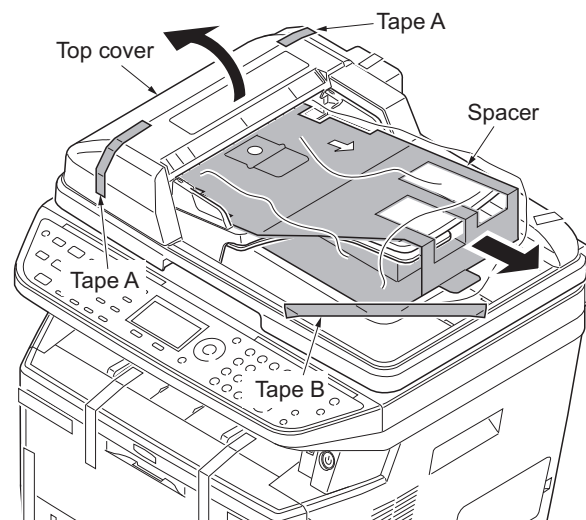


Figure 1-2-4

7. Remove two tapes.

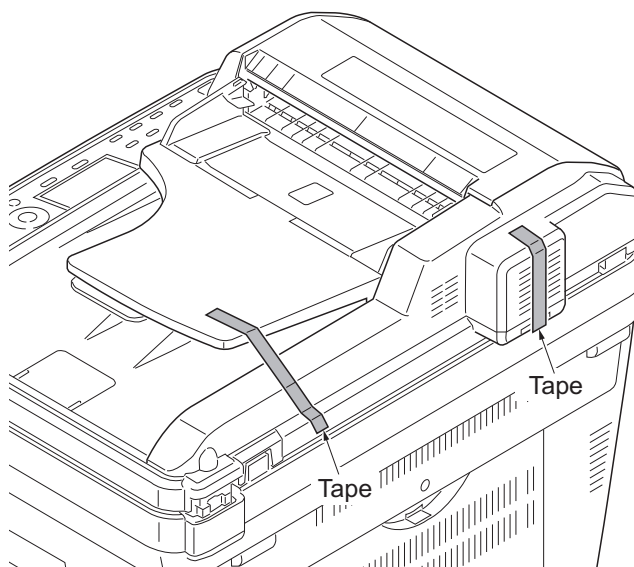


Figure 1-2-5

- 8. Open the DP.
- 9. Remove the sheet.
- 10. Remove the paper.

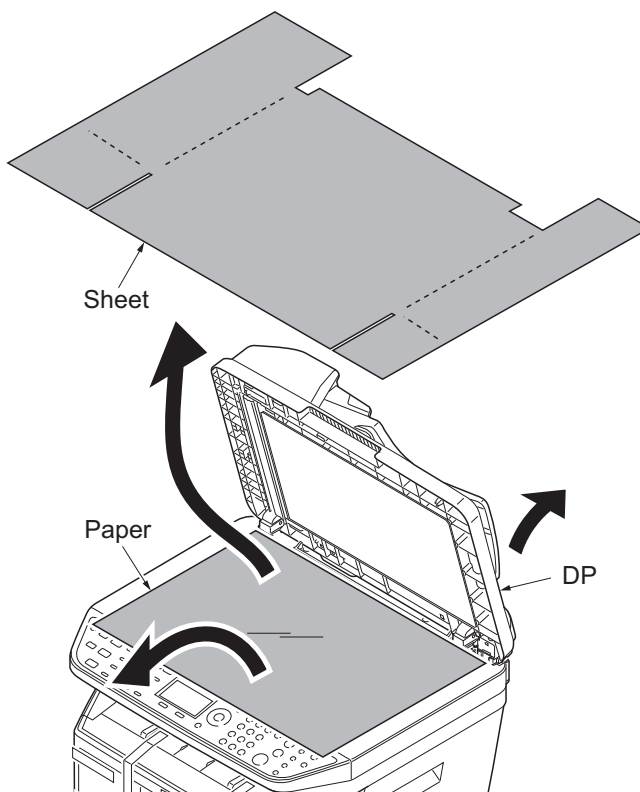


Figure 1-2-6

11. Remove the tape A.
12. Move the lock lever to the position of release.
* : When turning on power if the lock lever is not released, the error message is displayed.
13. Close the DP.
14. Remove eight tapes B.

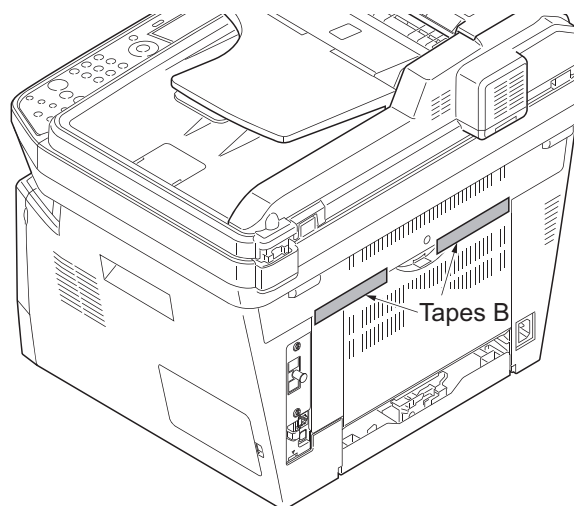
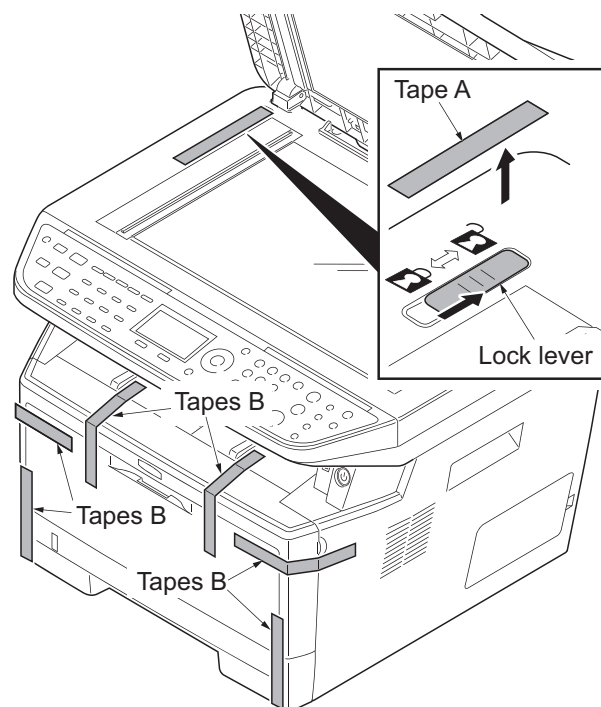


Figure 1-2-7